

María Santísima de la Victoria

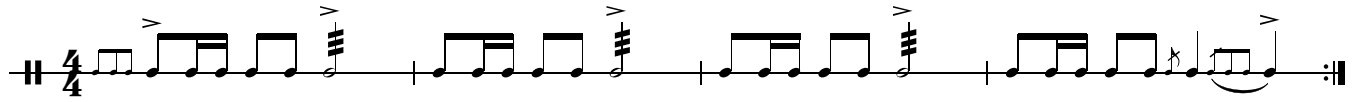
Dedicada a la Hermandad de Jesús Resucitado y María Santísima de la Victoria de Ayamonte,
Domingo de Resurrección, Iglesia de Nuestra Señora de las Angustias.

Caja

A

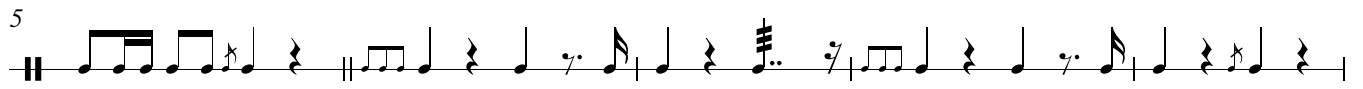
Andantino $\text{♩} = 110$

Juan Carlos Cañada Gómez



2.

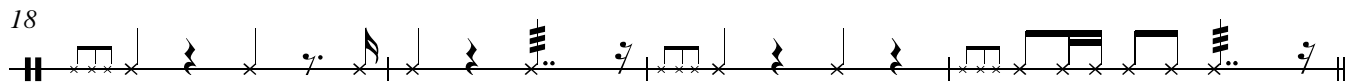
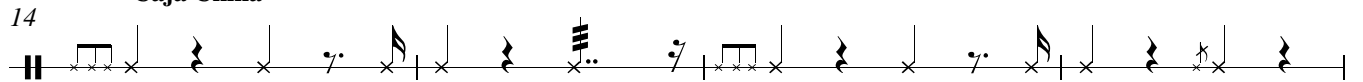
B



C

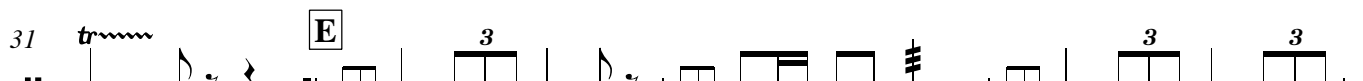
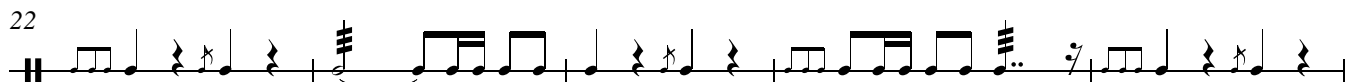
Sotto Voce

Caja China



D

loco



$p \leftarrow f$

mf



mf

V.S.

1. | 2.

39 **F**
f

Detailed description: This block contains measures 39 to 42. Measure 39 starts with a first ending bracket. Measure 40 features a triplet of eighth notes. Measure 41 has a boxed letter 'F' above it. Measure 42 has another triplet of eighth notes. The dynamic marking *f* is centered below the staff.

43 *f*

Detailed description: This block contains measures 43 to 46. Measures 43, 44, 45, and 46 each contain a triplet of eighth notes. The dynamic marking *f* is centered below the staff.

47 *p* *pp*

Detailed description: This block contains measures 47 to 50. Measures 47 and 48 each contain a triplet of eighth notes. Measures 49 and 50 are marked with a hairpin crescendo leading to a dynamic marking of *pp*. The dynamic marking *p* is centered below the staff.

51 **G**
mp

Detailed description: This block contains measures 51 to 53. Measure 51 has a boxed letter 'G' above it. Measure 52 features a triplet of eighth notes. Measure 53 has another triplet of eighth notes. The dynamic marking *mp* is centered below the staff.

54 *f*

Detailed description: This block contains measures 54 to 56. Measures 54, 55, and 56 each contain a triplet of eighth notes. The dynamic marking *f* is centered below the staff.

57 *f*

Detailed description: This block contains measures 57 and 58. Measure 57 features a triplet of eighth notes. Measure 58 has another triplet of eighth notes. The dynamic marking *f* is centered below the staff.

59 **H**
mf

Detailed description: This block contains measures 59 to 62. Measure 59 has a boxed letter 'H' above it. Measures 59, 60, 61, and 62 each contain a triplet of eighth notes. The dynamic marking *mf* is centered below the staff.

63 *f*

Detailed description: This block contains measures 63 to 65. Measures 63, 64, and 65 each contain a triplet of eighth notes. The dynamic marking *f* is centered below the staff.

1. | 2.

66 *f*

Detailed description: This block contains measures 66 to 68. Measures 66, 67, and 68 each contain a triplet of eighth notes. The dynamic marking *f* is centered below the staff.

69 **I**
f

Detailed description: This block contains measures 69 to 71. Measure 69 has a boxed letter 'I' above it. Measures 69, 70, and 71 each contain a triplet of eighth notes. The dynamic marking *f* is centered below the staff.

1. | 2.

72 *p* *f*

Detailed description: This block contains measures 72 to 75. Measures 72, 73, and 74 each contain a triplet of eighth notes. Measure 75 has another triplet of eighth notes. A hairpin crescendo is shown below the staff, starting at *p* and ending at *f*. The dynamic marking *f* is centered below the staff.